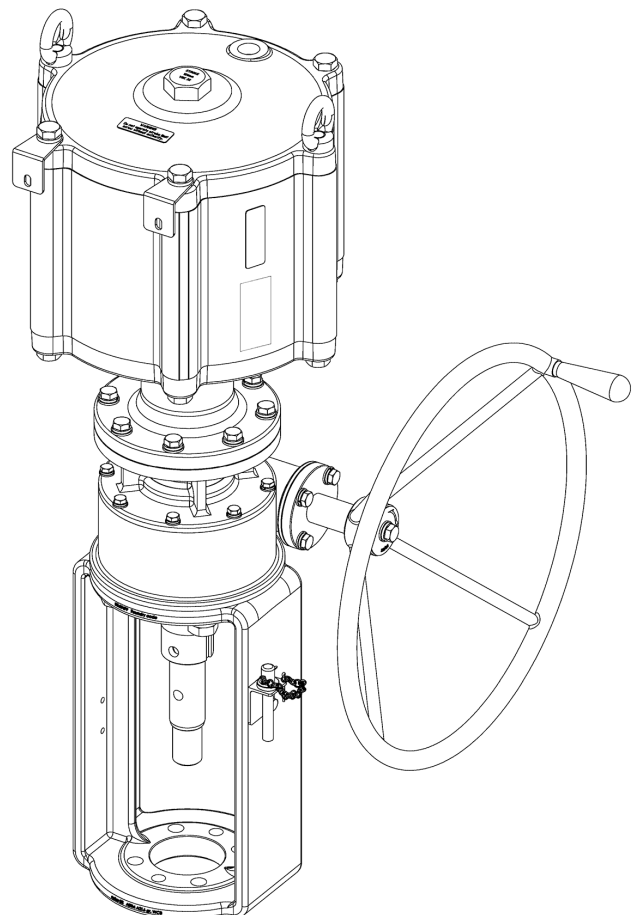


# Pneumatic linear cylinder actuator

## Series VBC

Installation, maintenance and  
operating instructions



## Table of Contents

<b>GENERAL</b>	<b>3</b>	<b>MALFUNCTIONS</b>	<b>11</b>
Scope of the manual	3	<b>TOOLS</b>	<b>11</b>
Structure and operation	3	<b>ORDERING SPARE PARTS</b>	<b>11</b>
Actuator markings	3	<b>EXPLODED VIEWS AND PARTS LISTS</b>	<b>12</b>
Specifications	3	<b>DIMENSIONS AND WEIGHTS</b>	<b>13</b>
Recycling and disposal	4	<b>TYPE CODE</b>	<b>15</b>
Safety precautions	4		
<b>TRANSPORTATION, RECEPTION AND STORAGE</b>	<b>5</b>		
<b>MOUNTING AND REMOVAL</b>	<b>5</b>		
Actuator air supply	5		
Mounting the actuator on the valve	5		
Removal of the actuator from the valve	5		
<b>MAINTENANCE</b>	<b>7</b>		
General	7		
Replacement of piston seals for VBC	7		
Operation of the handwheel	8		
Removal of the handwheel sub assembly	10		
Adjustment for valve stem	10		

### **READ THESE INSTRUCTIONS FIRST!**

These instructions provide information about safe handling and operation of the valve.

If you require additional assistance, please contact the manufacturer or manufacturer's representative.

### **SAVE THESE INSTRUCTIONS!**

Addresses and phone numbers are printed on the back cover.

Subject to change without notice.

All trademarks are property of their respective owners.



This product meets the requirements set by the Customs Union of the Republic of Belarus, the Republic of Kazakhstan and the Russian Federation.

# 1 GENERAL

## 1.1 Scope of the manual

This manual provides essential information of Neles™ VB series, linear double-acting pneumatic cylinder actuators. As information of valve body and trim design is not clearly illustrated here, those who want to see more details of them had better check individual IMO manuals of the valves.

**NOTE:**  
Selection and use of the actuator in specific applications require careful consideration from many aspects. Due to the nature of the product, this manual cannot cover all the individual situations that may occur when the actuator is used. If you are uncertain about use of the actuator or its suitability for your intended purpose, please contact Neles for more information.

## 1.2 Structure and operation

VBC models are linear double-acting pneumatic cylinder actuators. Excellent accuracy and long run reliability is achieved through the use of piston and well fitted seal rings in the actuator.

The VBC double acting cylinder actuators are designed for use in both modulating control and on-off service. They provide heavy duty and reliable operation and are well suited for many different kinds of applications. The high performance internal coating resists wear and corrosion and the replaceable inner parts guarantee a long life cycle.

Optional handwheel is available for manual operation. The detailed structure is revealed by the type code shown on the valve identification plate. The type code is explained in Section 10.

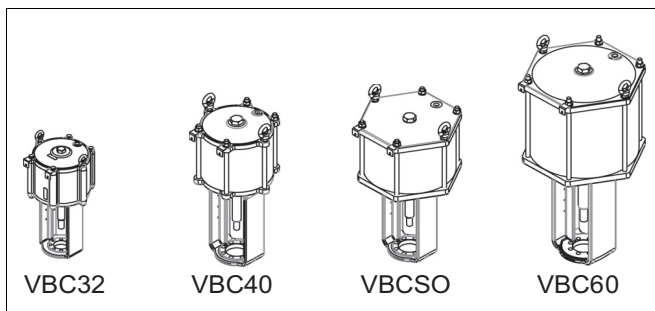


Fig. 1 VBC actuator without the handwheel

## 1.3 Actuator markings

The actuator is provided with an identification plate, see Fig. 2. Identification plate markings are:

1. Manufacturing year
2. Type code (model)
3. Serial numbers, BOM codes
4. Travel
5. Max. pressure
6. EAC & CE marking and Check signature

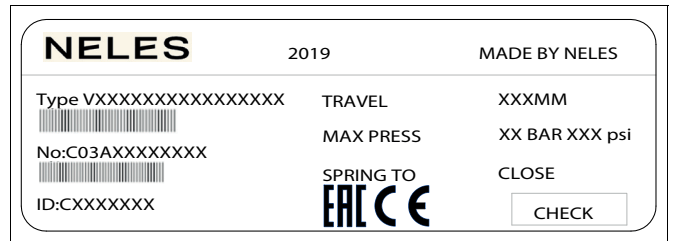


Fig. 2 Example of identification plate

Also, provided with a warning plate, see Fig. 3

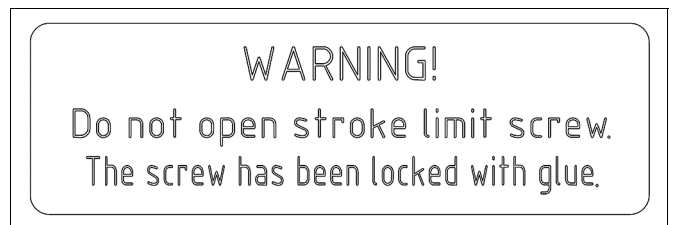


Fig. 3 Warning plate

## 1.4 Specifications

Table 1 VBC Actuators temperature ranges

Description	Standard VBC	High. Temp	Low. Temp.	Arctic
Temp. range	-20 °C to 70 °C	-20 °C to 120 °C	-40 °C to 70 °C	-55 °C to 70 °C
Type code ref. (sign 8)	A	H	L	S

Note:

1. Temperature: Ambient temperature
2. Type code reference: Please see in page 15 (materials)
3. Other low temperature range: Please contact Neles

Table 2 VBC Actuators air supply connections

Standard	3/4" NPT for VBC32, VBC40
	1" NPT for VBC50, VBC60
Optional	Please contact Neles

Note:

1. Maximum supply pressure for VBC: 10 bar / 145 psi

Table 3 VBC Actuators specifications

Actuator Size	Piston dia. (mm)	Stem dia. (mm)	Effect Area		Volume		Maximum Stroke		Thrust at Pressure		Pressure Thrust		Max. Allowable ressure			
			cm <sup>2</sup>	inch <sup>2</sup>	dm <sup>2</sup>	inch <sup>2</sup>	mm	inch	bar	psi	N	lbs	bar	psi		
			32	315	40	767	119	9.2	561.5	120	4.72	4	58	29136	6550	10
40	400	55	1237	192	22.3	1358.8	180	7.09	6	86	43704	9825				
									8.5	121	61915	13919				
									4	58	47006	10567				
50	500	55	1944	301	35.0	2135.2	180	7.09	6	86	70509	15851				
									8.5	121	99888	22456				
									4	58	73867	16606				
60	600	65	2827	438	79	4830.4	280	11.02	6	86	110800	24909				
									8.5	121	156967	35288				
									4	58	110779	24904				
									6	86	166169	37356				
									8.5	121	235406	52921				

\* Note:

1. Maximum stroke: Available to extend according to the required specifications.
2. The volume is based on above maximum stroke.
3. The thrust values are not included other considerable factors.

Table 4 VBC Actuators stroking time

Size	Stroke (mm)	ND Model	Stroke time(Sec.)		ND Model	Stroke time(Sec.)	
			VBC	VBC		VBC	VBC
			Load	Vent		Load	Vent
32	50	NDX	5	5	ND9_06	7	7
	60		6	6		8	8
	70		7	7		9	9
	80		8	8		10	10
	120		10	10		12	12
40	60	NDX	9	9	ND9_06	14	14
	70		10	10		17	17
	80		11	11		20	19
	120		14	14		23	22
50	60	NDX	11	11	ND9_06	27	26
	70		13	12		30	29
	80		14	13		34	33
	120		20	19		38	36
60	140	NDX	15	15	ND9_06	31	30
	160		16	16		35	34
	180		17	17		39	37
	200		18	18		40	38
	280		22	22		44	42

1. Mounted with ND 9200 / NDX smart positioner and Air set only
2. With B72G-2AS-980 Air set (1/4")
3. Air supply pressure: 5.0 barg (72 psi)
4. Stroking time accuracy: ± 10 %

## 1.5 Recycling and disposal

Most actuator parts can be recycled if sorted according to material. Most parts have material marking. A material list is supplied with the actuator. In addition, separate recycling and disposal instructions are available from the manufacturer. An actuator can also be returned to the manufacturer for recycling and disposal against a fee.

## 1.6 Safety precautions

### CAUTION:

#### Don't exceed the permitted values!

Exceeding the permitted pressure value marked on the actuator may cause damage and lead to uncontrolled pressure release in the worst case. Damage to the equipment and personal injury may result.

### CAUTION:

#### Don't dismantle a pressurized actuator!

Dismantling a pressurized actuator leads to uncontrolled pressure release. Shut off the supply pressure and release pressure from the diaphragm case before dismantling the actuator. Otherwise, personal injury and damage to equipment may result.

### CAUTION:

#### Follow the instructions given on the actuator warning plates!

### CAUTION:

#### Take the weight of the actuator or valve combination into account when handling it!

Do not lift the valve combination from the actuator, positioner, limit switch or their piping. Lift the actuator as directed in Section 2, lifting ropes for a valve combination should be fastened around it. The weights are shown in Section 9. Dropping may result in personal injury or damage to the equipment.

## ATEX/Ex Safety

### CAUTION:

Potential electrostatic charging hazard, do not rub surface with dry cloth

### CAUTION:

Ensure the general process and worker protection from static electricity in the facilities.

### NOTIFICATION:

The actual surface temperature of actuator is depended on the process and ambient conditions. The protection from high or low temperature must be considered by the end user before put into service.

## 2 TRANSPORTATION, RECEPTION AND STORAGE

VBC series actuators have several rules for transportation and storage. First, product handlers have to make sure that the actuator and its associated parts are not damaged during transportation.

If the actuator needs to get stored before installation, it should be stored in the place where humidity and risk of physical damage are low. Also, protective caps of each air port should not be removed before installation.

The Fig. 4 is a good example of lifting the actuator. The two eye nuts connected with wires will be used for the lifting and moving the actuator. Actuator weights in Section 9 have to be taken in consideration to minimize accidental risks.

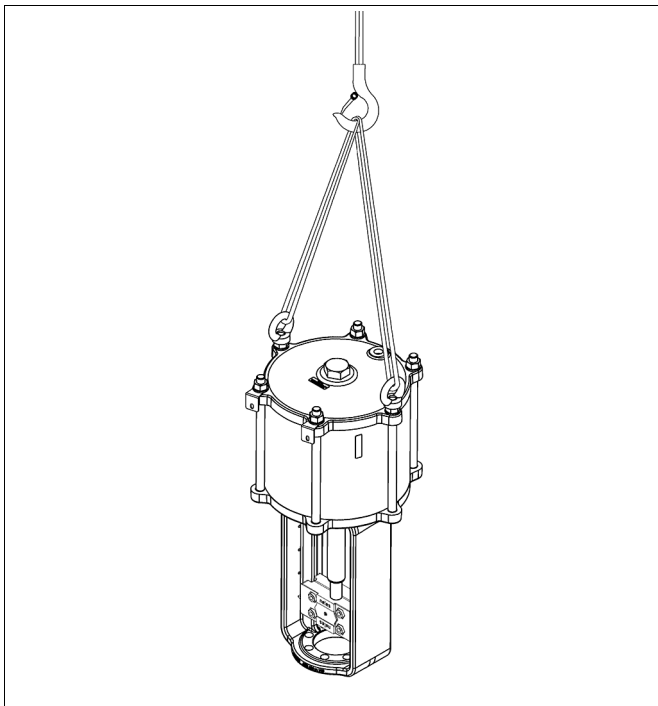


Fig. 4 Lifting the actuator

## 3 MOUNTING AND REMOVAL

### 3.1 Actuator air supply

Dry compressed air or natural gas can be used in actuators in open-close operation, no oil spraying is needed. Clean, dry and oil-free instrument air must be used for piston actuators with a positioner. The air supply connections are pre-sented in the dimensional drawings in Section 9. The maximum supply pressure is 10 bar.

### 3.2 Mounting the actuator on the valve

Installation of actuators has several steps as in the following. Neles recommends assemblers should follow the steps in the way how Neles describes. Before mounting the actuator onto a valve joint area, assemblers must check if the valve is fully constrained with pipelines or certain tools to prevent potential risks. Assemblers ought to keep in mind that all the cautions below should be taken into account for every single move.

**CAUTION:**  
Beware of the cutting movement of the valve!

Several types of Neles™ valves can be used with suitable clamps. Refer to the selected valve model manuals for further information on their installation, maintenance and operation.

- Mount the new or repaired actuator on top of the valve bonnet, using a suitable lifting device.
- Insert the hexagon screws and tightly fasten the yoke by turning the hexagon screws clockwise using tightening tools.
- Connect air line with actuator.
- Get the piston rod (10) completely reached to the downward end by specified air pressure.
- Adjust piston rod length after clamping the clamp (27) according to rated travel (stroke) as 'open' and 'close' position as per pressurizing and depressurizing both the sides of cylinder chambers (see 4.5 Adjustment for valve stem).
- Tighten the 4 socket head screws (27A) on the clamp (27) and the lower piston rod locknut.
- Connect accessories with actuator.

**CAUTION:**  
Avoid turning the valve plug and stem when plug is on seat ring to prevent the seating line from being damaged.

The installation position can be selected freely, but Neles recommends upright installation. The actuator is thus best protected against damage from supply air impurities or water.

When necessary, lubricate the actuator piston rod (10) and bearing (2) with Cortec VCI 369 or an equivalent anti-corrosive agent to prevent it from jamming due to rust.

The actuator must not be allowed to come in contact with the pipework, because the vibrations may damage it or cause unsatisfactory operation.

### 3.3 Removal of the actuator from the valve

**CAUTION:**  
Make sure the valve is not pressurized when removing the actuator.

- Shut off and disconnect the air supply lines and accessories.
- Loosen the plug piston rod locknut and the 4 socket head screws (27A) on the clamp (27).
- Remove the clamp (27).
- Support the actuator with the suitable lifting device.
- Remove the hexagon screws from the valve bonnet.
- Remove the actuator from the valve body assembly.

**CAUTION:**  
Avoid turning the valve plug and stem when plug is on seat ring to prevent the seating line from being damaged.

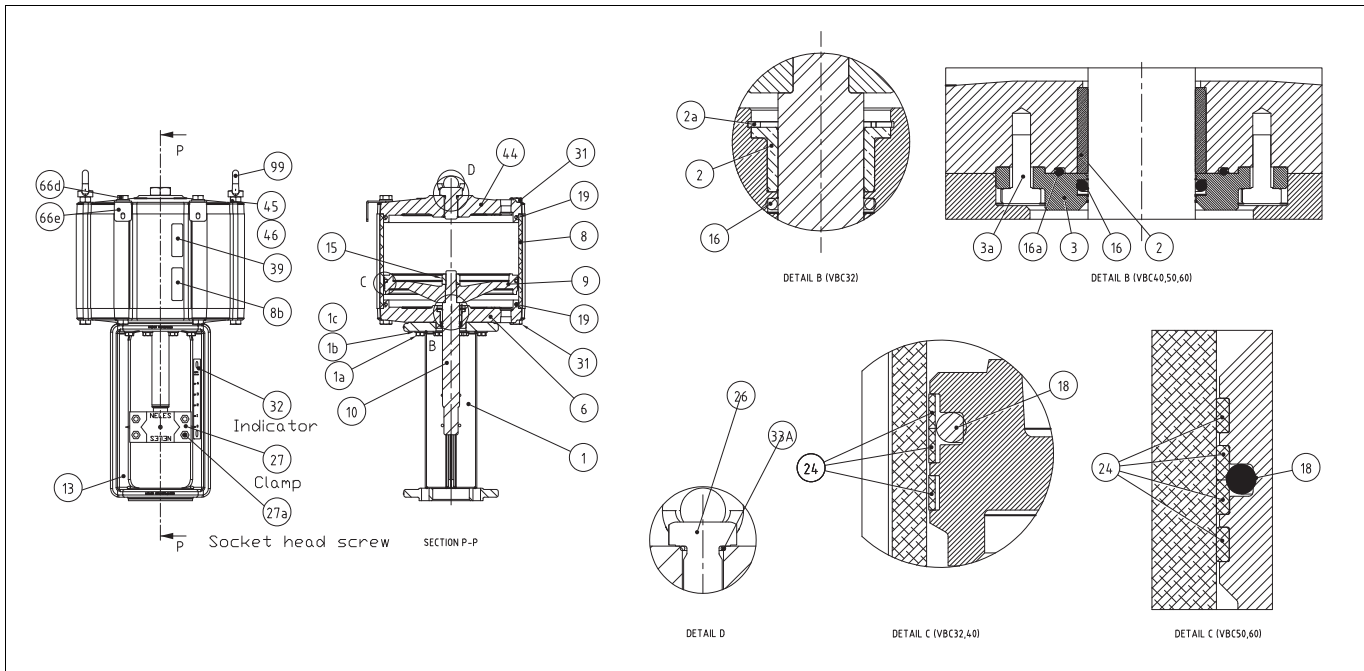


Fig. 5 VBC Actuator Constructions without Handwheel

Part No.	Description	Material	Recommended spare part
1	YOKE	ASTM A216 Gr. WCB	
1a	HEXAGON SCREW	ISO 3506 A2-70	
1b	WASHER	AISI 304	
1c	SPRING WASHER	AISI 304	
2	SLIDE BEARING	BRONZE	Cat 3
2a (VB 32)	RETAINER RING	DIN 17222-C67	Cat 3
3 (VB 40, 50, 60)	COVER PLATE	AISI 304	Cat 3
3 (VB 40, 50, 60)	HEXAGON SCREW	ISO 3506 A2-70/80	Cat 3
6	CYLINDER BASE	EN 1563-GJS-400-15	Cat 3
8	CYLINDER PIPE	EN 1706 G-AISI 10Mg+ANODIZED	Cat 3
8b	STICKER	PLASTIC	
9	PISTON	EN 1561-GJL-200	Cat 3
10	PISTON ROD	PISTON ROD STEEL +HCr	Cat 3
15	HEXAGON NUT	ASTM A194 gr. 2HM	
16	O-RING	NITRILE, NBR	Cat 1*
16a (VB 50)	O-RING	NITRILE, NBR	Cat 1*
18	O-RING	NITRILE, NBR	Cat 1*
19	O-RING	NITRILE, NBR	Cat 1*
24	PISTON RING	UHMWPE	Cat 1*
26	LIMIT SCREW	ISO 3506 A2-70	
27**	CLAMP	ASTM A351 or. CF8	Cat 3
27a**	SOCKET HEAD SCREW	ISO 3506 A2-70	Cat 3
31(VB 32)	HEXAGON SCREW	ISO 3506 A2-70	
31	STUD	ISO 3506 A2-70, EN 10083-1.7218+ZINC	
32	INDICATOR	AISI 304	
33a	O-RING	NITRILE, NBR	Cat 1*
39	IDENTIFICATION PLATE	POLYESTER	
44	CYLINDER END	EN 1563-GJS-400--15	Cat 3
44a	WARNING PLATE	POLYESTER	
45	HEXAGON NUT	ISO 3506 A2-70, SS STEEL or CARBON STEEL+ZINC	
46	WASHER	AISI 304, CARBON STEEL+ZINC	
66d	SPRING WASHER	AISI 304	
66e	BRACKET	AISI 304	
99	LIFTING EYE NUT	JIS G3101- SS400	

Spare part category 1: Recommended soft parts for maintenance

Spare part category 3: Complete overhaul (for complete overhaul, parts of all two categories are needed)

\* Delivered as a set

\*\* V-A mounting parts

## 4 MAINTENANCE

### CAUTION:

Observe the safety precautions listed in Section 1.6 before starting work!

### CAUTION:

When handling the actuator or the control valve assembly, take its weight into account!

### 4.1 General

Although the Neles actuators are designed to work under severe conditions, proper preventative maintenance can significantly help to prevent unplanned downtime and in real terms reduce the total cost of ownership. Neles recommends inspecting the valves at least every five (5) years.

The inspection and maintenance interval depend on the actual application and process condition. The inspection and maintenance intervals can be specified together with your local Neles experts.

During this periodic inspection the parts detailed in the Spare Part Set should be replaced. Time in storage should be included in the inspection interval.

Maintenance can be performed as presented below. For maintenance assistance, please contact your local Neles office. The numbers in parentheses refer to the parts lists and the exploded views of the actuator in Section 8 and in Fig. 5, unless otherwise stated.

### NOTE:

When sending goods to the manufacturer for repair, do not disassemble them. Clean the valve carefully and flush the valve internals. For safety reasons, inform the manufacturer of the type of medium used in the valve (include material safety datasheets (MSDS)).

### NOTE:

In order to ensure safe and effective operation, always use original spare parts to make sure that the valve functions as intended.

### NOTE:

For safety reasons, replace pressure retaining bolting if the threads are damaged, have been heated, stretched or corroded.

### NOTE:

If you send the actuator to the manufacturer for repair, do not dismantle it. For safety reasons, please see the warning plate on the top side of actuator.

### CAUTION:

Do not dismantle the actuator or remove it from the pipe-line while the valve is pressurized!

### CAUTION:

Make sure the valve is not pressurized when removing the actuator.

### 4.2 Replacement of piston seals for VBC

We recommend that all seals be replaced when the actuator has been dismantled for servicing.

The actuator must be depressurized and the supply air pipes disconnected.

### Disassembling

- Check that the actuator has been depressurized, and remove air tubing with instrument parts from the cylinder end (44) and cylinder base (6).

### NOTE:

If actuator is equipped with the handwheel, change the operation mode from 'Manual' to 'Auto' before the actuator is dismantled.

- Remove the clamp (27) after loosened the socket head screws (27A).
- Detach the actuator from valve.
- Loosen the limit screw (26) and remove it from cylinder end (44).
- Loosen the VB 32 screws (31) or VB 40/50 stud (31) and hexagon nut (45) and remove it from cylinder end (44).
- Pull up the cylinder end (44) and remove the O-rings (19) from the O-ring groove.
- Pull up and remove the piston (9) with piston rod (10).
- Remove the piston ring (24) and O-ring (18) from the piston (9).
- Loosen the VB 32 screws (31) or VB 40/50 stud (31) and hexagon nuts (45) and remove it from cylinder base (6).
- Remove the cylinder (8).
- Remove the hexagon screws (1A) and washers (1B) from the yoke (1) side.
- Remove the retainer ring (2A) and bearing (2) and O-ring (16).
- Remove the cylinder base (6) from the yoke (1).

### Cleaning and replacing

- Clean every part.
- Replace all related seal and O-rings by new ones.
- Check whether each part gets scratched or damaged.

### Reassembling

### CAUTION:

Checking whether scratched on the piston rod (10) and dirty particles inside of the bearing (2) and the wear ring and O-rings before reassembling.

- Apply VCI-369 to O-ring groove and each pressure surface of the piston (9).
- Use tie ring to assemble the piston ring (24) to prefabricated piston (9) and piston rod (10) set. Refer to Fig. 6.
- Lubricate seal space (inner surface of the bearing (2)) and new O-rings with Unisilikon L250L or equal silicone grease.
- Put the bearing (2) and new O-rings (16) into cylinder base (6).
- Mount the cylinder pipe (8) to cylinder base (6).
- Fasten the VB 32 screw (31) or VB 40/50 stud (31) and hexagon nut (45) on cylinder base (6).
- Put the prefabricated piston set into the cylinder pipe (8) and cylinder base (6).
- Make sure that piston rod (10) is not scratched.
- Mount the cylinder end (44) to the cylinder pipe (8).
- Fasten the VB 32 screw (31) or VB 40/50 stud (31) and hexagon nut (45) on cylinder end (44).
- Input pressed air as per specified air pressure after assembly.
- Check leakage from assembled parts and if operation is smooth.
- Mount the yoke (1) on the cylinder base (6).
- Tighten the hexagon screws (1A) with washers (1B) at the yoke side.

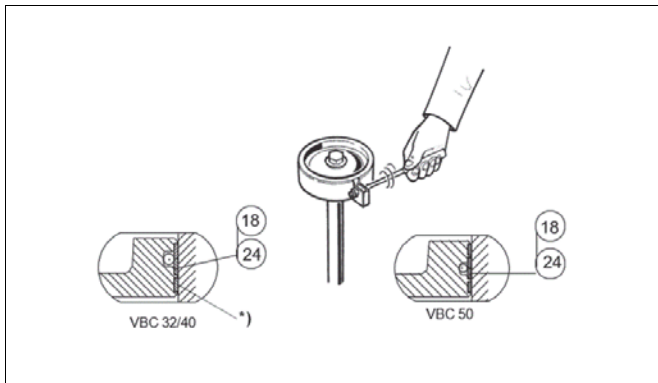


Fig. 6 Tightening piston seals with a tie ring

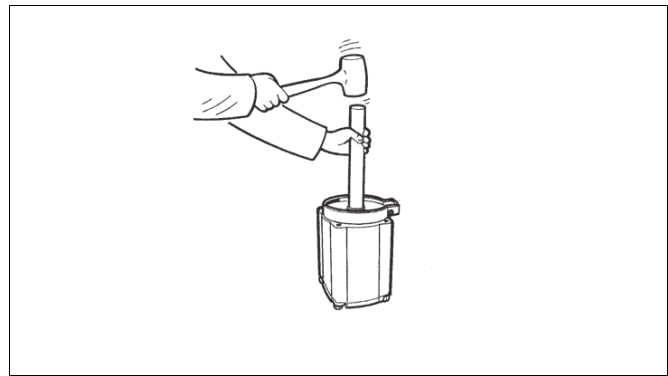


Fig. 7 Placing the piston into cylinder pipe

### 4.3 Operation of the handwheel

Manual override handwheel can open or close the valve when the valve stem and actuator stem are engaged by a pin. Please refer to the Fig. 8 and Fig. 9.

- Check the current valve position.
- Turn the handle to fit with the taper pin hole of the piston rod (10) and the gear pipe (90).
- Fit and insert the taper pin (93) into the pin holes (2 holes in the piston rod).
- Operation handwheel to be open or close position  
--- Manual mode.

- Return the taper pin (93) to be unlocked with the neutral position -  
-- Auto mode .

**NOTE:**

VB\_32/40/50 handwheel is located on the top of yoke and bottom of cylinder.

VB\_60 handwheel is loaded on the top of cylinder. Refer to Fig. 8.

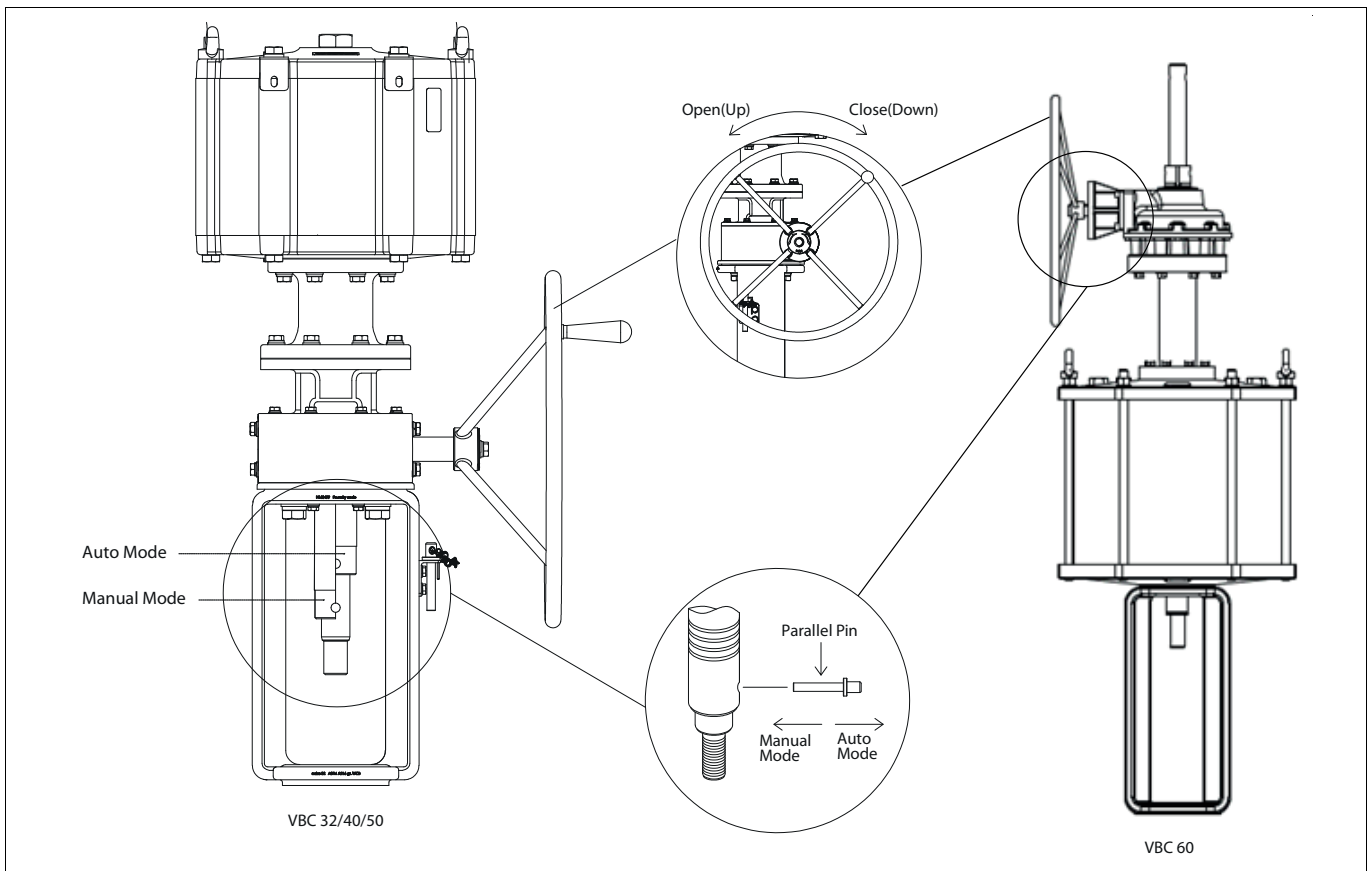


Fig. 8 VBC Actuator Constructions with Handwheel



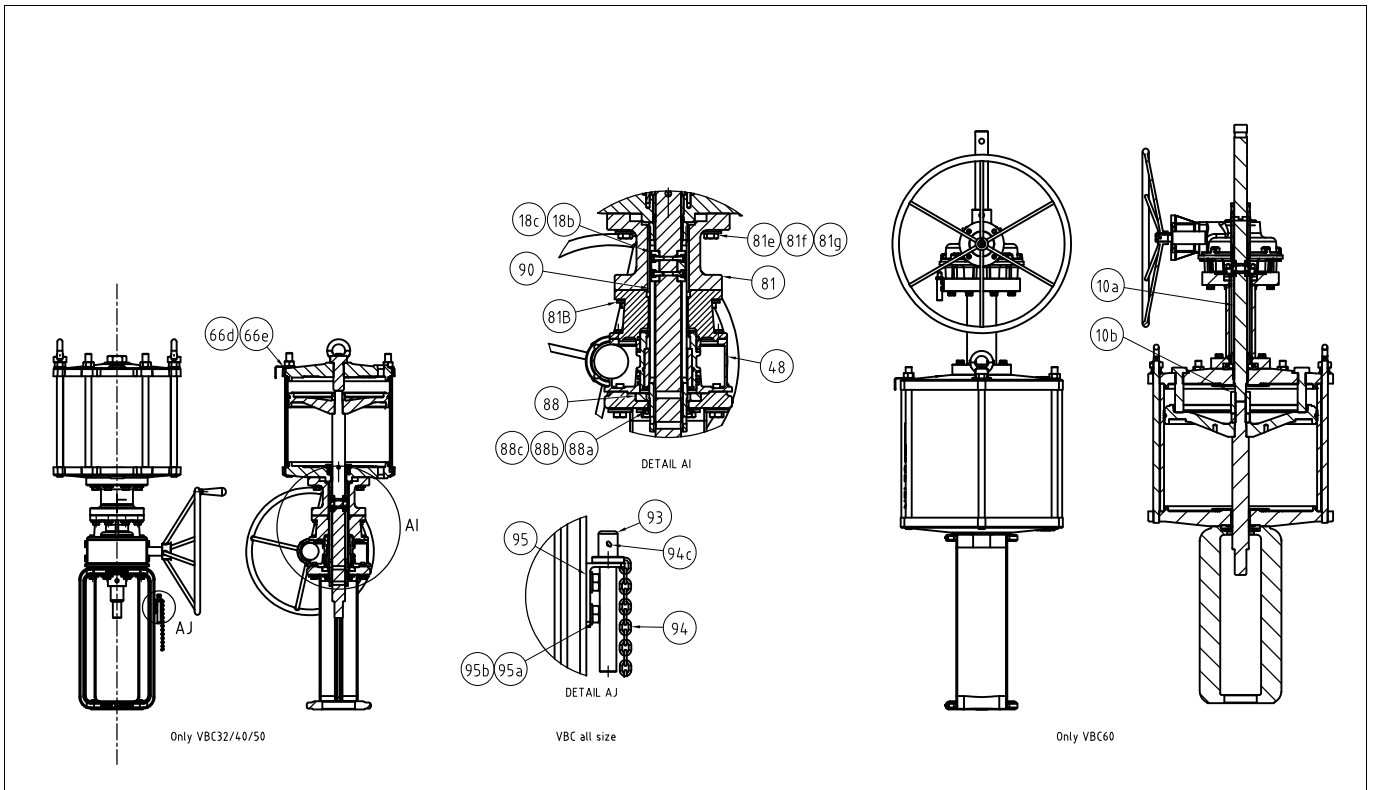


Fig. 9 VBC Actuator Constructions with Handwheel

Part No.	Description	Material	Recommended spare part	Note
18b	KEY	AISI 304+HCr		
18c	SOCKET HEAD SCREW	ISO 3506 A2-70		
48	GEAR BOX	DUCTILE IRON		
66d	SPRING WASHER	AISI 304		
66e	BRACKET	AISI 304		
81	GEAR BOX COVER	ASTM A105		
81b	HEXAGON SCREW	ISO 3506 A2-70		
81c	WASHER	AISI 304		VB_32/40/50 only
81d	SPRING WASHER	AISI 304		VB_32/40/50 only
81e	HEXAGON SCREW	ISO 3506 A2-70		
81f	WASHER	AISI 304		VB_32/40/50 only
81g	SPRING WASHER	AISI 304		VB_32/40/50 only
88	LIMITER	AISI 304		
88a	HEXAGON SCREW	ISO 3506 A2-70		
88b	WASHER	AISI 304		
88c	SPRING WASHER	AISI 304		
90	GEAR PIPE	AISI 316L		
93	PIN	ASTM A564 gr. 630 H1100		
94	TAPER CHAIN	STAINLESS STEEL		
94c	SPLIT PIN	CARBON STEEL+ZINC		
95	HOLDER	AISI 304		
95a	HEXAGON SCREW	DIN 267 PART 11 A2-70		
95b	WASHER	AISI 304		VB_32/40/50 only
010a	PISTON ROD	PISTON ROD STEEL+HCr		VB_60 only
010b	COUPLING	ASTM A 564 gr. 630 H1025		VB_60 only

## 4.4 Removal of the handwheel sub assembly

The manual override requires no regular maintenance.

Please refer to Fig. 5 and 9, if needed.

- VB32~50: Confirm handwheel is in auto mode first and remove the clamp (27) with the socket head screws (27a).  
VB60: Confirm handwheel is in auto mode first
- VB32~60: Remove the hexagon screws (81e) and washers (81f) from the top of gear box cover (81).
- VB32~50: Lift the actuator up until the key (18b) gets exposed.  
VB60: Lift the gear box package up until the key (18b) gets exposed.
- VB32~50: Remove the key (18b) and take out the actuator from the gear box package.  
VB60: Remove the key (18b) and take out the gear box package from the actuator.
- VB32~50: Take the gear pipe (90) out first and remove the hexagon screws (1a) and washers (1b) from the yoke (1) side.  
VB60: Take the gear pipe (90) out.
- VB32~50: Remove the socket head screw (88a) from the yoke (1) side.  
VB60: NA
- VB32~50: lift the handwheel sub-assembly from the yoke (1) and remove the limiter (88) from the yoke side.  
VB60: lift the handwheel sub-assembly from the cylinder end side.
- VB32~60: Repairing or replacing parts..

### CAUTION:

**Keep your fingers, tools or other items out of the housing while operating the actuator with the cover open!**

## 4.5 Adjustment for valve stem

### CAUTION:

**Avoid turning the valve plug and stem when plug is on seat ring to prevent the seating line from being damaged.**

The actuator stroke is always longer than the valve stem stroke, therefore, the actuator stroke is required to adjust when the stems are coupling together. Please refer to Fig. 5 & 9, if needed.

- Push the valve stem and plug until its end surface slightly touches the seat ring.
- With the handwheel or pneumatically, operate the actuator to the fully open position.
- Measure the maximum distance between top end of the valve stem and the other end of actuator piston rod (10).
- Calculate the gap by the following calculation (measured value - rated travel = gap).
- Adjust position of the piston rod (10) to have the gap calculated in the previous procedure between the two ends.
- Fix both the stem thread areas by the clamp (27).
- Align the stroke indicator (32) with the clamp indicator arrow and check actuator stroke for operation.
- Tighten the socket head screws (27A) for finish if the calibrated stroke is well set.
- If the stroke is still out of target range, continue to do the same calibration loop until it gets done.

Table 5 VBC Tightening torques for screws

PN	Description	Screw Size	Q'ty	VB required Torques for each size							
				32		40		50		60	
				N.m	Lbf.ft	N.m	Lbf.ft	N.m	Lbf.ft	N.m	Lbf.ft
1a	Hexagon Screw	M12 x 1.75P	8	40	30						
		M16 x 2.0P	8			80	59	80	59		
		M24 x 3.0P	8							200	147
27a	Socket Head Screw	M12 x 1.75P	4	40	30						
		M16 x 2.0P	4			80	59	80	59	80	59
31	Screw or stud	M16 x 2.0P	12	80	59						
		M24x 3.0P	6			200	147	200	147	200	147
99	Lifting Eye Nut	M16 x 2.0P	2	80	59						
		M24 x 3.0P	2			200	147	200	147	200	147
18c	Socket Head Screw	M8 x 1.25P	4	26	19	26	19	26	19	26	19
81b	Hexagon Screw	M12 x 1.75P	8	40	30						
		M16 x 2.0P	8			80	59	80	59	80	59
81e	Hexagon Screw	M12 x 1.75P	8	40	30						
		M16 x 2.0P	8			80	59	80	59	80	59
88a	Socket Head Screw	M8 x 1.25P	4	26	19						
		M10 x 1.5P	4			28	21	28	21	28	21

Note:

Torque value tolerance:  $\pm 10\%$

Torques are nominal values

## 5 MALFUNCTIONS

Table 6 Possible malfunctions

Symptom	Possible cause	Action
Irregular or slow operation	Low supply pressure	Make sure that supply pressure complies with minimum thrust required by valve. Check that supply air pipes are large enough.
	Positioner fault	Check positioner operation.
	Valve fault	Check that valve functions properly without actuator.
	Incorrect actuator rating	Contact manufacturer to check rating.
	Leak in cylinder pipe or O-rings	Replace O-rings. See sect. 4, maintenance.
	Cylinder damaged by impurities	Note installation position recommended. Replace cylinder if damaged.

## 6 TOOLS

### Removal of the actuator

- Wrench set (mm)
- Hex socket wrench set
- Chisel and hammer (10 pound)
- +, - drivers

### Piston seal installation

- Mounting collar (Tool ID)  
7814-7 For VB 32  
7814-8 For VB 40  
7814-9 For VB 50  
7814-10 For VB 60

## 7 ORDERING SPARE PARTS

### NOTE:

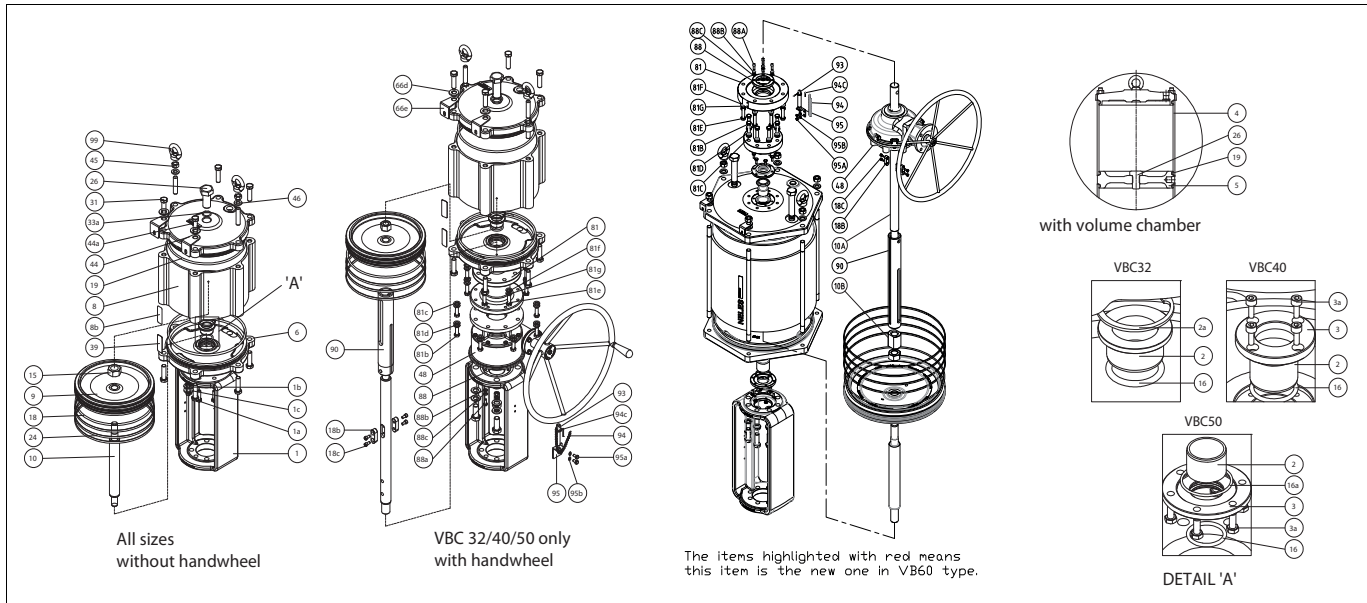
Always use original spare parts to make sure that the valve functions as intended.

When ordering spare parts, always include the following information:

- Type code, sales order number, serial number
- Number of the parts list, part number, name of the part and quantity required

This information can be found from the identification plate or documents.

## 8 EXPLODED VIEWS AND PARTS LISTS



Part No.	Description	Material	Recommended spare part
1	YOKE	ASTM A216 Gr. WCB	
1a	HEXAGON SCREW	ISO 3506 A2-70	
1b	WASHER	AISI 304	
1c	SPRING WASHER	AISI 304	
2	SLIDE BEARING	BRONZE	Cat 3
2a(VB 32)	RETAINER RING	DIN 17222-C67	Cat 3
3(VB 40,50)	COVER PLATE	AISI 304	Cat 3
3a(VB 40,50)	HEXAGON SCREW	ISO 3506 A2-70/80	Cat 3
4	VOLUME CHAMBER	EN 1706 G-AISI 10Mg+ANODIZED	Cat 3
5	MIDDLE PLATE	EN 1563-GJS-400-15	Cat 3
6	CYLINDER BASE	EN 1563-GJS-400-15	Cat 3
8	CYLINDER PIPE	EN 1706 G-AISI 10Mg+ANODIZED	Cat 3
8b	STICKER	PLASTIC	
9	PISTON	EN 1561-GJL-200	Cat 3
10	PISTON ROD	PISTON ROD STEEL+HCr	Cat 3
15	HEXAGON NUT	ASTM A194 gr. 2HM	
16	O-RING	NITRILE, NBR	Cat 1*
16a(VB 50)	O-RING	NITRILE, NBR	Cat 1*
18	O-RING	NITRILE, NBR	Cat 1*
18b	KEY	AISI 304+HCr	
18c	SOCKET HEAD SCREW	ISO 3506 A2-70	
19	O-RING	NITRILE, NBR	Cat 1*
24	PISTON RING	UHMWPE	Cat 1*
26	LIMIT SCREW	ISO 3506 A2-70	Cat 3
31(VB 32)	HEXAGON SCREW	ISO 3506 A2-70	
31	STUD	ISO 3506 A2-70, EN 10083-1.7218+ZINC	
33a	O-RING	NITRILE, NBR	Cat 1*

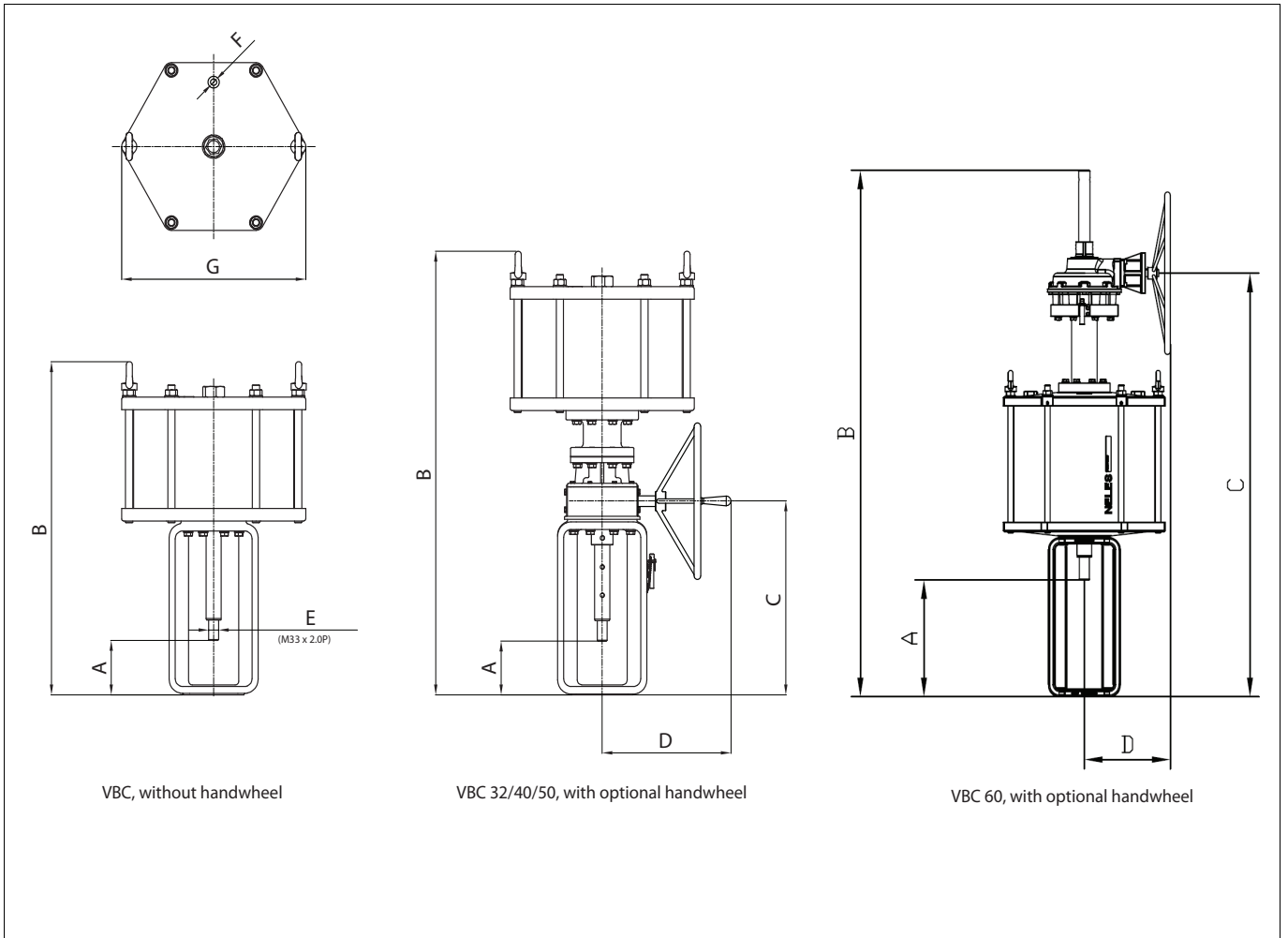
Part No.	Description	Material	Recommended spare part
39	IDENTIFICATION PLATE	POLYESTER	
44	CYLINDER END	EN 1563-GJS-400-15	Cat 3
44a	WARNING PLATE	POLYESTER	
45	HEXAGON NUT	ISO 3506 A2-70, SS STEEL or CARBON STEEL+ZINC	
46	WASHER	AISI 304, CARBON STEEL+ZINC	
48	GEAR BOX	DUCTILE IRON	
66d	SPRING WASHER	AISI 304	
66e	BRACKET	AISI 304	
81	GEAR BOX COVER	ASTM A105	
81b	HEXAGON SCREW	ISO 3506 A2-70	
81c	WASHER	AISI 304	
81d	SPRING WASHER	AISI 304	
81e	HEXAGON SCREW	ISO 3506 A2-70	
81f	WASHER	AISI 304	
81g	SPRING WASHER	AISI 304	
88	LIMITER	AISI 304	
88a	HEXAGON SCREW	ISO 3506 A2-70	
88b	WASHER	AISI 304	
88c	SPRING WASHER	AISI 304	
90	GEAR PIPE	AISI 316L	
93	PIN	ASTM A564 gr. 630 H1100	
94	TAPER CHAIN	STAINLESS STEEL	
94c	SPLIT PIN	CARBON STEEL+ZINC	
95	HOLDER	AISI 304	
95a	HEXAGON SCREW	DIN 267 PART 11 A2-70	
95b	WASHER	AISI 304	
99	LIFTING EYE NUT	JIS G3101-SS400	

Spare part category 1: Recommended soft parts for maintenance

Spare part category 3: Complete overhaul (for complete overhaul, parts of all two categories are needed)

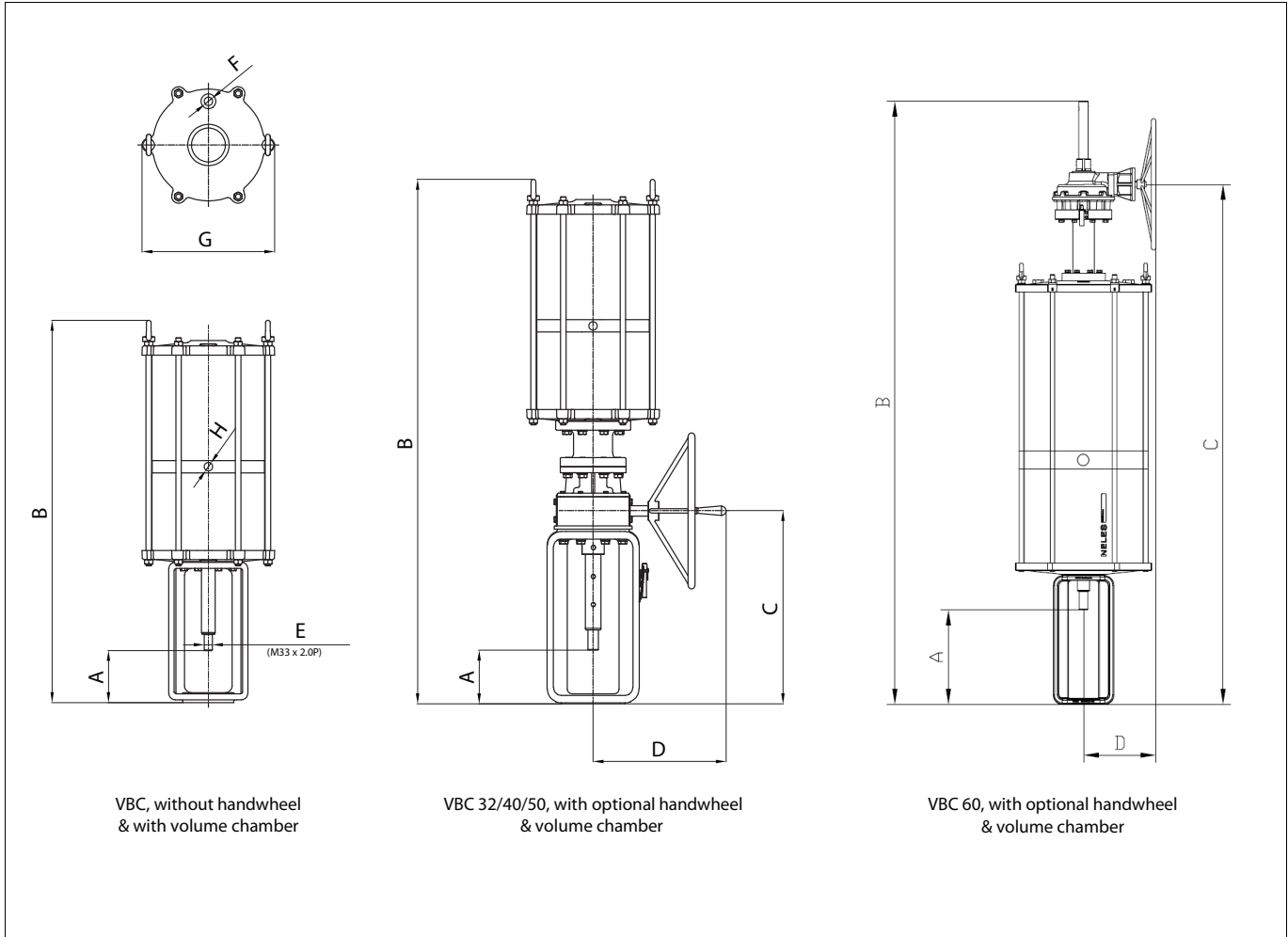
\*) Delivered as a set

# 9 DIMENSIONS AND WEIGHTS



Dimension (mm) / Size	Stroke Range	Without handwheel					With handwheel				
		A	B	F	G	Weight (kg)	A	B	C	D	Weight (kg)
VBC32	50,60,70,80,120	153	769	3/4" NPT	392	96	158	1093	471	417	147
VBC40	60,70,80,120,140,160,180	185	1054	3/4" NPT	499	190	185	1403	619	427	263
VBC50	60,70,80,120,140,160,180	184	1066	1" NPT	610	297	179	1415	619	427	371
VBC60	140,160,180,200,280	222	1404	1" NPT	724	507	222	2265	1823	333	660

Dimension (mm) / Size	Stroke Range	Without handwheel					With handwheel				
		A	B	F	G	Weight (lbs)	A	B	C	D	Weight (lbs)
VBC32	50,60,70,80,120	6	30.3	3/4" NPT	15.4	212	6.2	43	18.5	16.4	324
VBC40	60,70,80,120,140,160,180	7.3	41.5	3/4" NPT	19.6	419	7.3	55.2	24.4	16.8	580
VBC50	60,70,80,120,140,160,180	7.2	42	1" NPT	24	655	7	55.7	24.4	16.8	818
VBC60	140,160,180,200,280	8.7	55.3	1" NPT	28.5	1117.7	179	1415	619	427	1455



Dimension (mm) / Size	Stroke Range	Without handwheel					With handwheel					
		A	B	F	G	H	Weight (kg)	A	B	C	D	Weight (kg)
VBC32_V	50,60,70,80,120	153	1116	3/4" NPT	390	3/4" NPT	129	158	1440	471	417	180
VBC40_V	60,70,80,120,140,160,180	185	1550	3/4" NPT	499	3/4" NPT	255	185	1899	619	427	329
VBC50_V	60,70,80,120,140,160,180	184	1570	1" NPT	610	1" NPT	415	179	1919	619	427	490
VBC60_V	140,160,180,200,280	222	1903	1" NPT	724	1" NPT	787	222	3045	2603	333	950

Dimension (mm) / Size	Stroke Range	Without handwheel					With handwheel					
		A	B	F	G	H	Weight (lbs)	A	B	C	D	Weight (lbs)
VBC32_V	50,60,70,80,120	6	43.9	3/4" NPT	15.4	3/4" NPT	284	6.2	56.7	18.5	16.4	397
VBC40_V	60,70,80,120,140,160,180	7.3	61	3/4" NPT	19.7	3/4" NPT	562	7.3	74.8	24.4	16.8	725
VBC50_V	60,70,80,120,140,160,180	7.2	61.8	1" NPT	24	1" NPT	915	7	75.6	24.4	16.8	1080
VBC60_V	140,160,180,200,280	8.7	74.9	1" NPT	28.5	1" NPT	1735	8.7	119.9	102.5	13.1	2094

# 10 TYPE CODE

## Pneumatic Cylinder Actuator, Linear type, Series VBC

1.	2.	3.	4.	5.	6.	7.	8.	9.	10.	11.	12.	13.	14.
VB	C	32	X	070	A	E	A	K	A	X	D	X	A

### ACTUATOR CONSTRUCTIONS

1.	<b>ACTUATOR SERIES</b>
VB	Pneumatic Cylinder actuator, Linear type

2.	<b>FUNCTION CODE</b>		
	<b>Direction</b>	<b>Spring to</b>	<b>Air to Stem</b>
C	Double acting (no spring)		

3.	<b>ACTUATOR SIZE</b>	
	<b>Cylinder Inner Diameter</b>	
32	Ø315 mm	
40	Ø400 mm	
50	Ø500 mm	
60	Ø600 mm	

4.	<b>SPRING RANGE</b>
X	Not applicable (no spring)

5.	<b>STROKE</b>			
	<b>VB 32</b>	<b>VB 40</b>	<b>VB 50</b>	<b>VB 60</b>
040	IQI	IQI	IQI	IQI
050	STD	IQI	IQI	IQI
060	STD	STD	STD	IQI
070	STD	STD	STD	IQI
080	STD	STD	STD	IQI
120	STD	STD	STD	IQI
140	IQI	STD	STD	STD
160	IQI	STD	STD	STD
180	IQI	STD	STD	STD
200	NA	NA	NA	STD
280	NA	NA	NA	STD
YYY	Contact Neles for special stroke			

### MATERIALS

6.	<b>CYLINDER MATERIAL</b>	
A	Aluminium	
S	Carbon steel + HCr (Offshore)	

7.	<b>PISTON MATERIAL</b>	
E	EN 1561-GJL-200	
S	EN 1561-GJL-400 (Arctic version)	

8.	<b>SEAL MATERIAL</b>	
	<b>Material</b>	<b>Temperature range</b>
A	Nitrile rubber	General, -20...+70°C
L	ECO (Epiclohydrin rubber)	Low temp, -40...+70°C
S	Arctic version	Arctic, -55...+70°C
<b>Optional Seal Application</b>		
H	Viton (Fluorocarbon rubber)	High temp, -20...+120°C

9.	<b>BOLTING MATERIAL</b>	
K	SS for VB 32, CS+Zinc plating for VB 40/50	
A	CS+Zinc plating for steel cylinder (Offshore)	

### OTHERS

10.	<b>POSITION LIMITATION</b>	
A	General construction	

11.	<b>EXTERNAL OVERRIDE OPTION</b>	
X	Not Applicable	
A	Handwheel, Side mounted (applicable 32/40/50 only)	
T	Top-Side Handwheel mounted (applicable 60 only)	

12.	<b>AIR SUPPLY CONNECTION</b>	
	<b>Connection Size</b>	<b>Actuator Size</b>
D	3/4" NPT	VB 32/40
E	1" NPT	VB 50/60

13.	<b>OPTIONS</b>	
X	Not Applicable	
V	Volume Chamber	
Y	Special	

14.	<b>MODEL CODE</b>	
A	Original model	

**Valmet Flow Control Oy**

Vanha Porvoontie 229, 01380 Vantaa, Finland.

Tel. +358 10 417 5000.

[www.valmet.com/flowcontrol](http://www.valmet.com/flowcontrol)

Subject to change without prior notice.

Neles, Neles Easyflow, Jamesbury, Stonel, Valvcon and Flowrox, and certain other trademarks, are either registered trademarks or trademarks of Valmet Oyj or its subsidiaries in the United States and/or in other countries.

For more information [www.neles.com/trademarks](http://www.neles.com/trademarks)

